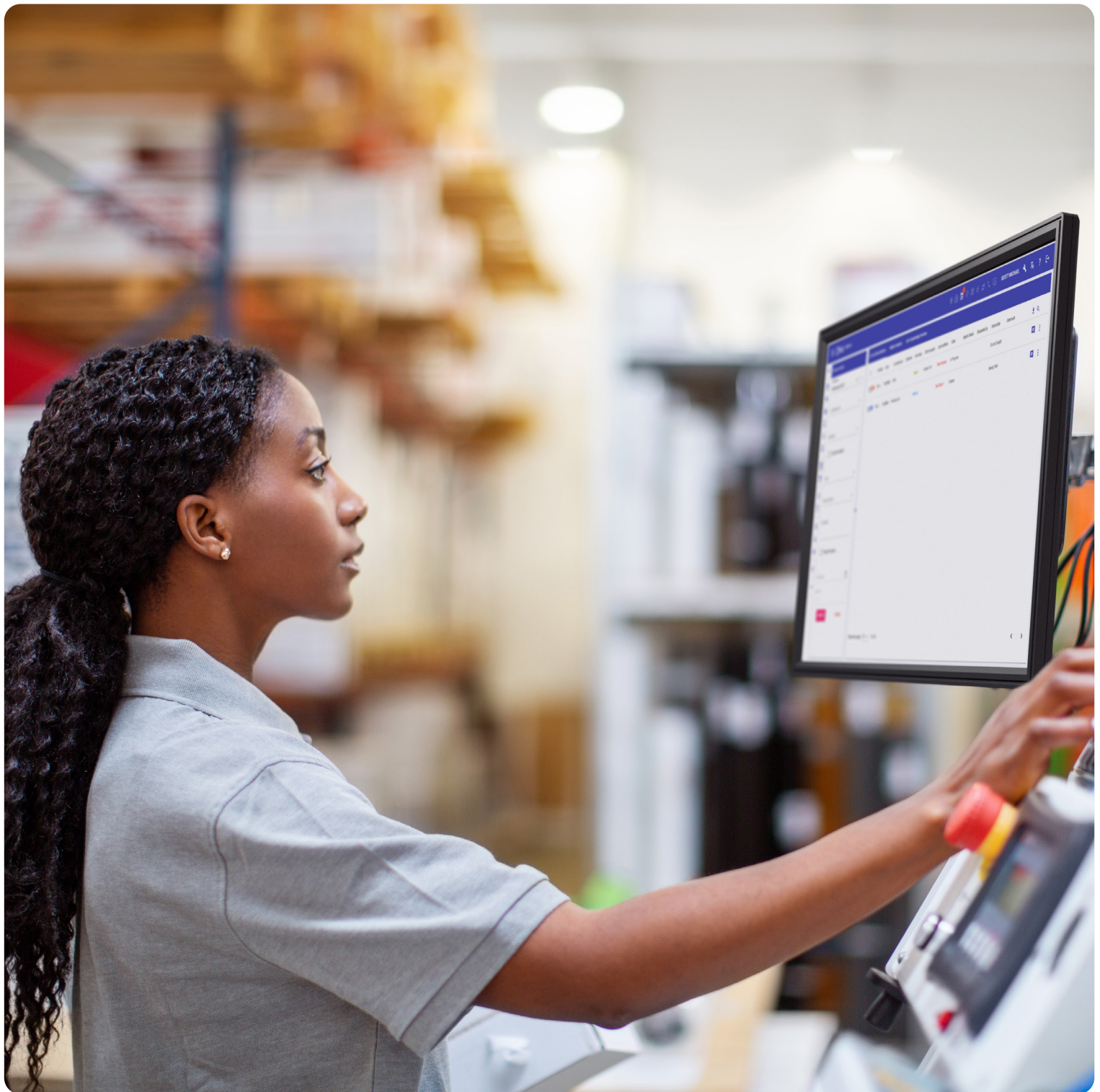


IoT and Sensor Integration

An Ascom Enterprise Solution for situational awareness



Supporting more efficient processes

Industrial IoT solutions help you avoid downtime while optimizing your processes, but only if the data gets to the right people at the right time. With IoT and Sensor Integration, you and your staff are ready to meet that challenge.



Integrating and distributing data is a challenge

Data from sensors is useful to help monitor and optimize processes, helping you find efficiency gains as well as equipment issues before they lead to costly downtime. But collecting and making the best use of sensor data can be a real challenge, as data volumes are often massive, stored centrally and can need a data engineer to understand it.

To make the greatest efficiency gains, the data needs to be smoothly aggregated and distributed to the mobile workforce of production operatives and maintenance engineers, alerting only the relevant people at the relevant locations.

IoT and Sensor Integration solution

Increasing situational awareness, the IoT and Sensor Integration solution ensures managers can easily access and analyze their equipment and process data. At the same time, staff can more easily and confidently handle increasingly complex and highly automated production lines, secure in the knowledge that any alerts will be sent to the right person in real time.

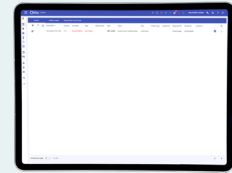


Key features

The IoT and Sensor Integration solution is centered around driver-based integration through industry standard protocols, mobile devices with in-built features such as real-time location technologies, alarm dashboards, incident mapping and mobile response workflows.



Mobile Alerting



List View of current alarms

- System that adapts to your way of working
- Open system via API and ability to connect to other systems
- Driver-based integration, supporting a wide range of industry standard protocols
- Vendor-neutral integration with industrial machinery and processes, as well as location and other contextual information
- Wide range of Ascom location technologies ranging from IR, through LF to DECT location
- Supports location services from third-party vendors (BLE/Wi-Fi) maximizing ROI of existing technology
- Multiple options for support for mobile response workflows
- Configurable alarm dashboards — from simple list view to interactive map
- Enhanced logging and reporting of the complete trail in one view

Software and licences

The solution is based on Ascom Ofelia enterprise alarm and workflow management software. Ofelia software enables you to integrate with third-party systems via Modbus, OPC-UA, ESPA, SIP, email, etc., while it is HTML5-enabled to allow user access from any PC or screen.

Solution components

Mobile Devices	Item	Part No.
Pagers	a72	CHAT-XXXXXX
Dect/Wi-Fi Handsets	d63, d83, i63	DH7-XXXX, DH8-XXXX, WH2-XXXX
Smart Devices (incl. DECT variants)	Ascom Myco 3, Ascom Myco 4	SH2-XXXX, SH4-XXXX
Android Devices	3 rd Party Android Devices	N/A
Software	Item	Part No.
Task Management Kit	Tasks	OFL-TASKS-SK
Extension Licence	Messaging Users	OFL-USER-X
Extension Licence	3 rd party RTLS	OFL-GEO-EXT
Extension Licence	Input Drivers	OFL-ENTRY-DRV-X

Take the next step

Contact your local Ascom representative to start implementing IoT and Sensor Integration in your workplace.



Ascom Holding AG

Zugerstrasse 32
CH-6340 Baar
Switzerland
info@ascom.com
Phone: + 41 41 544 78 00
ascom.com

About Ascom

Ascom is a global solutions provider focused on healthcare ICT and mobile workflow solutions. The vision of Ascom is to close digital information gaps allowing for the best possible decisions—anytime and anywhere. Ascom's mission is to provide mission-critical, near-real time solutions for highly mobile, ad hoc, and time-sensitive environments. Ascom uses its unique product and solutions portfolio and software architecture capabilities to devise integration and mobilization solutions that provide truly smooth, complete, and efficient workflows for healthcare as well as for industry and retail sectors.

Ascom is headquartered in Baar (Switzerland), has operating businesses in 18 countries and employs around 1,300 people worldwide. Ascom registered shares (ASCN) are listed on the SIX Swiss Exchange in Zurich.